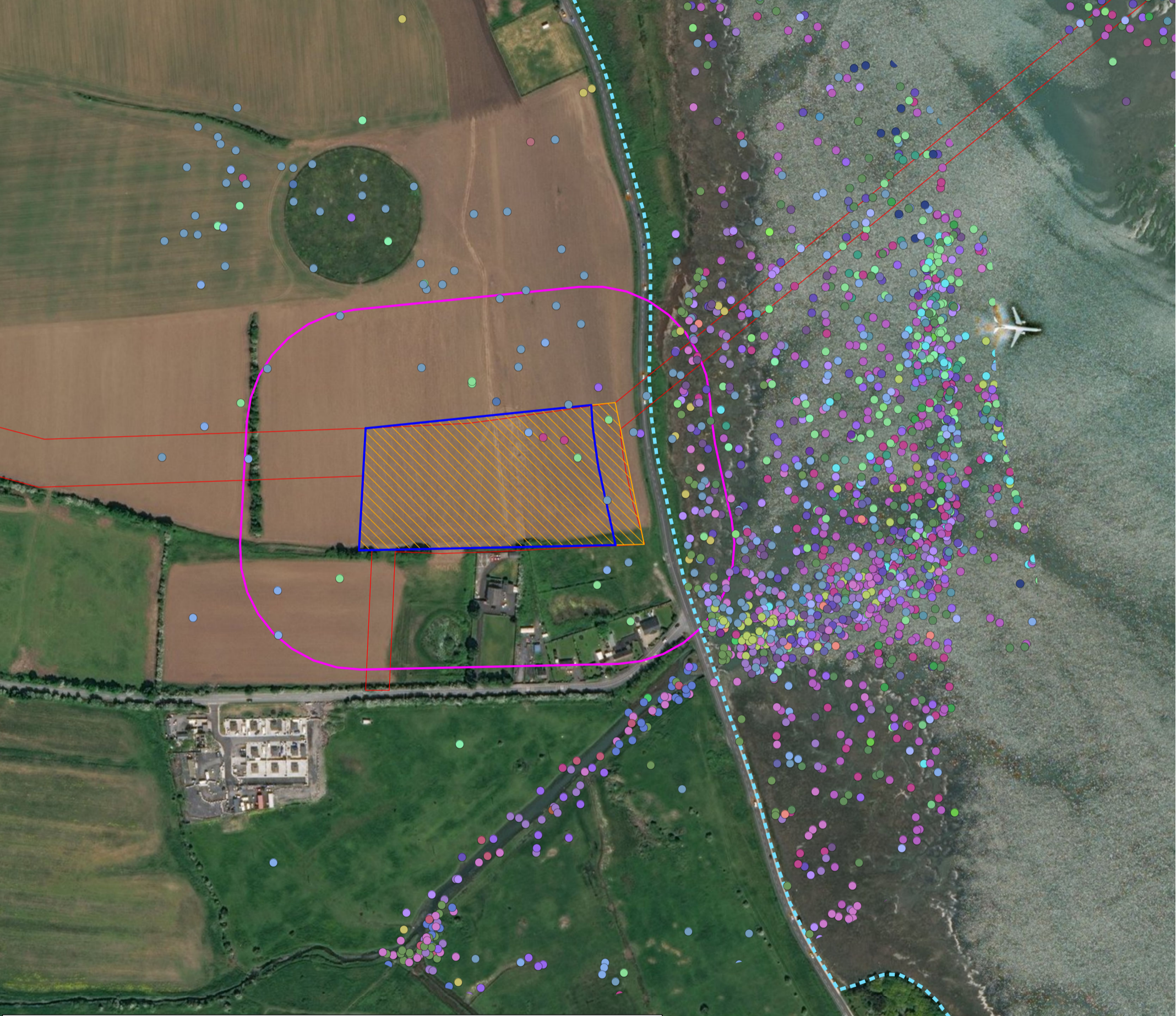
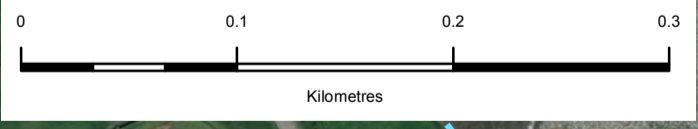


- Avocet (1)
- Bar-tailed Godwit (32)
- Black-headed Gull (84)
- Black-necked Grebe (1)
- Black-tailed Godwit (29)
- Brent Goose (light-bellied) (80)
- Buzzard (2)
- Canada Goose (1)
- Common Gull (23)
- Common Sandpiper (2)
- Common Tern (1)
- Coot (11)
- Cormorant (4)
- Curlew (141)
- Dunlin (47)
- Golden Plover (11)
- Great Black-backed Gull (32)
- Greenshank (19)
- Grey Heron (71)
- Grey Plover (38)
- Guillemot (1)
- Herring Gull (119)
- Kestrel (1)
- Kingfisher (2)
- Knot (4)
- Lapwing (165)
- Lesser Black-backed Gull (30)
- Little Egret (76)
- Little Grebe (2)
- Mallard (111)
- Mediterranean Gull (3)
- Moorhen (28)
- Mute Swan (66)
- Oystercatcher (110)
- Peregrine (2)
- Pintail (1)
- Red-breasted Merganser (10)
- Redshank (117)
- Ring-billed gull (1)
- Ringed Plover (16)
- Ruff (2)
- Shelduck (229)
- Shoveler (1)
- Snipe (14)
- Teal (127)
- Turnstone (13)
- Whimbrel (16)
- Wigeon (65)



**Legend**

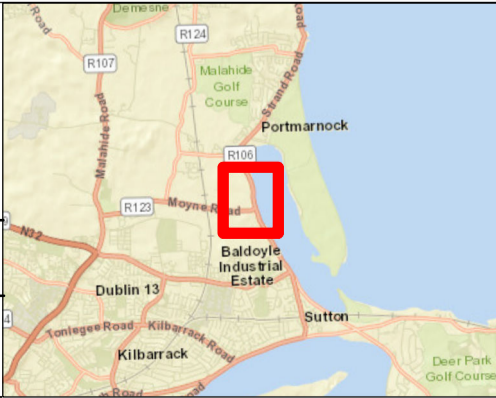
- Proposed Project Boundary
- Shaft construction noise daytime
- Proposed Construction Compound
- Major
- Estuarine Survey Area
- Minor (to 100 m)
- Special Protection Area



**Greater Dublin Drainage**

Project: Greater Dublin Drainage Project

Drawing Title: Figure 10.2 - Bird Distribution within 90 m of Construction Compound No. 9 (December 2014 to March 2018)



| Rev. | Date     | Purpose of revision                         | Drawn | Check'd | Rev'd | Appr'd |
|------|----------|---|-------|---------|-------|--------|
| f    | 21/05/18 | Additional survey data                      | CH    | RI      | KAG   | RI     |
| e    | 19/03/18 | Revision 1; infrastructure updated          | CH    | RI      | KAG   | RI     |
| d    | 05/03/18 | Final                                       | CH    | RI      | KAG   | RI     |
| c    | 17/01/18 | Noise contours updated                      | CH    | RI      | KAG   | RI     |
| b    | 17/01/18 | Infrastructure updated                      | CH    | RI      | KAG   | RI     |
| a    | 23/11/17 | Distance bands replaced with noise contours | CH    | RI      | KAG   | RI     |

Copyright © Ordnance Survey Ireland.  
Licence number 3/3/34/Irish Water.  
Service Layer Credits: Sources: Esri, HERE, DeLorme, USGS, Intermap, INCREMENT P, NRCan, Esri Japan, METI, Esri China (Hong Kong), Esri Korea, Esri (Thailand), MapmyIndia, NGCC, © OpenStreetMap contributors, and the GIS User Community

This drawing is not to be used in whole or in part other than for the intended purpose and project as defined on this drawing. Refer to the contract for full terms and conditions.

**UISCE**  
EIREANN - IRISH WATER

**JACOBS** **TOBIN**

Drawing Status: **Final**

Scale @ A3: 1:3,500 **DO NOT SCALE**

Job No.: 32102902

Drawing No.: 32102902-EIAR-1002